

Lift rods

LH Lift manufactures both mechanic and hydraulic top links that are designed for ease of use and reliability. Our range of lift rods covers everything from light-duty (CAT 1) to heavy-duty (CAT 4) applications. LH Lift lift rods are suitable for tractors ranging from 50 to 400 horsepower.

Common features of all of our lift rods:

- Easy to adjust without extra tools
- Easy mounting ensured by a wide adjusting range

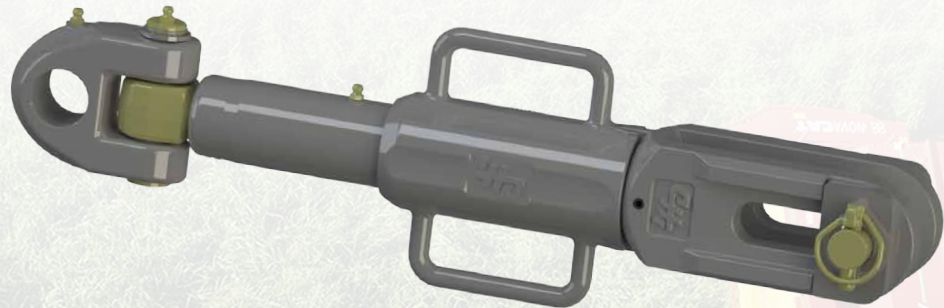
Solid lift rod



Lift rod with ball end



Lift rod with swivelling eyebolt



Hydraulic lift rod



LH  **Lift**

Faster. Smarter. Done.

Part options for lift rods



Ball ends

Category	Thread size
Cat 2	M27, M30
Cat 3	M33, M36
Cat 4	M36, M40, M45

Screw size

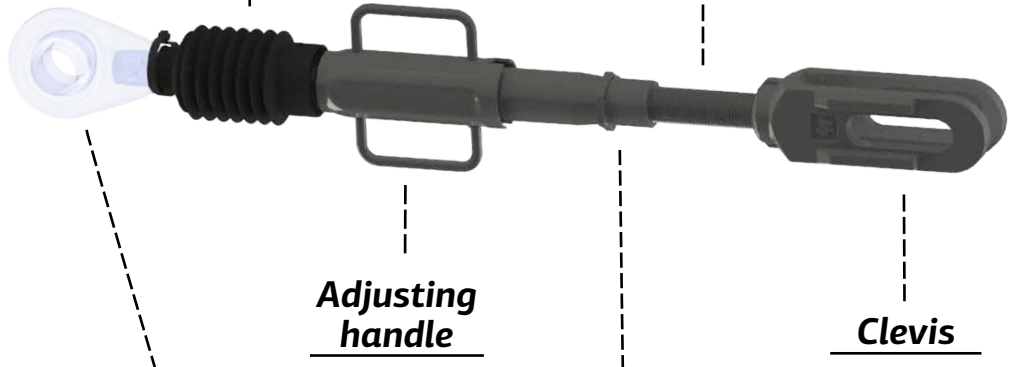
Category	Thread size
Cat 2	M27, M30
Cat 3	M33, M36
Cat 4	M36, M40, M45

Shaft protector



Ball ends with replaceable ball

Category	Thread size
Cat 2	M27, M30
Cat 3	M33, M36
Cat 4	M36, M40, M45



Adjusting handle

Adjusting tubes

Category	Diameter
Cat 2	45 mm
Cat 3	51 mm
Cat 4	57,7 mm

Clevis



Swivelling eyebolts

Category	Thread size	Diameter
Cat 2	M30	24,5 mm
Cat 3	M36	40 mm
Cat 4	M42, M45, M50	45,2 mm

